

St. Peters Square

577 MID RIVERS MALL DRIVE | ST. PETERS, MO 63376



Property Description

Located at two signalized intersections – Mid Rivers Mall Drive and St. Peter's Square Drive/ Mexico Road, and adjacent to a new 50-home development project, St. Peter's Square is the strong retail and suburban corridor of Mid Rivers Mall Drive. Anchored by Schnucks and Pet Supplies Plus, one available space remains (1,400 sf). There is an additional outlot opportunity with excellent visibility with an option for a drive-thru or pick-up window.

Property Highlights

- Spaces Available - 2 including 1 Outlot Building
- Traffic Counts & Cross Streets - Mid Rivers Mall Dr. (23,409 VPD); Mexico Rd. (17,031 VPD)

Offering Summary

Lease Rate:	Undisclosed
Available SF:	1,400 - 1,800 SF
Center Size:	108,496 SF

Demographics	1 Mile	3 Miles	5 Miles
Total Households	4,351	24,782	66,590
Total Population	10,990	63,674	166,718
Average HH Income	\$82,938	\$95,085	\$99,480

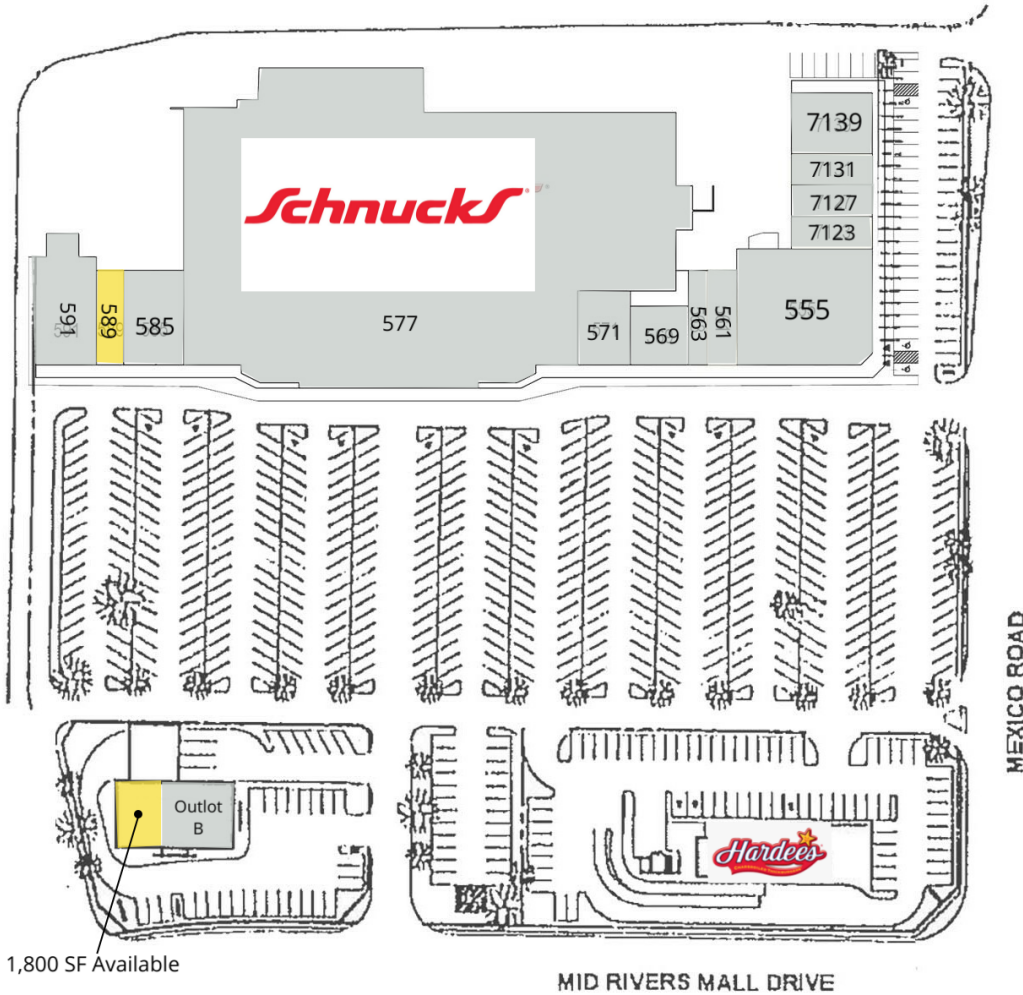
Kelly Long

314.994.4967

klong@descogroup.com

St. Peters Square

577 MID RIVERS MALL DRIVE | ST. PETERS, MO 63376



Suite	Tenant	Size
555	Pet Supplies Plus	8,500 SF
563	Great Clips	1,152 SF
569	Crown Optical	1,524 SF
571	Papa Murphy's	1,250 SF
577	Schnucks	74,672 SF
585	Chiro One	3,150 SF
591	AAA Auto Club	3,996 SF
7123	Mathnasium	1,110 SF
7127	Diamond Shoppe	1,110 SF
7131	CPR Cell Repair	1,110 SF
7139	El Maguey	3,600 SF
Outlot B	Heartland Dental	2,700 SF
Outlot	Hardees	0 SF
561	Bonsai Tea House	1,423 SF
589	Available	1,400 SF
Outlot A	Available	1,800 SF

Kelly Long
314.994.4967
klong@descogroup.com

St. Peters Square

577 MID RIVERS MALL DRIVE | ST. PETERS, MO 63376



Map data ©2023 Google Imagery ©2023 , Airbus, CNES / Airbus, Landsat / Copernicus, Maxar Technologies, U.S. Geological Survey, USDA/FPAC/Geo

Kelly Long
314.994.4967
klong@descogroup.com

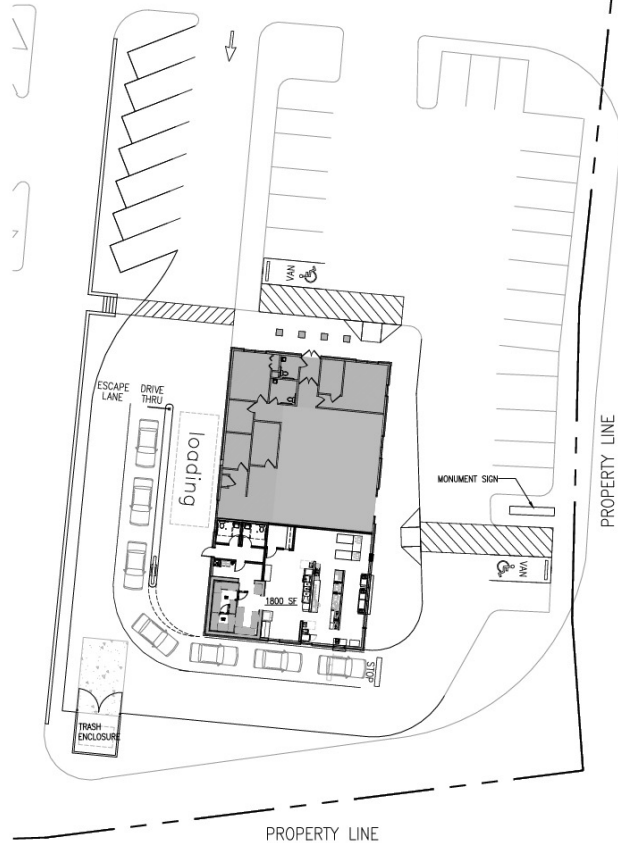
St. Peters Square

577 MID RIVERS MALL DRIVE | ST. PETERS, MO 63376



130 e. Jefferson Ste. 200
Kirkswood, MO 63122
314.394.1606 o. 314.394.1609 f.
www.yourdescarchitects.com
Certificate of Authority # 2011006331

OUTBUILDING
END CAP
ST. PETERS SQUARE, ST. PETERS, MO



PROPOSED SITE PLAN
SCALE: 1"=20' DATE: 05.03.2019



FLOOR 1

GROSS INTERNAL AREA
FLOOR 1: 1350 sq. ft.
TOTAL: 1350 sq. ft.
SIZES AND DIMENSIONS ARE APPROXIMATE, ACTUAL MAY VARY.



Kelly Long
314.994.4967
klong@descogroup.com

St. Peters Square

577 MID RIVERS MALL DRIVE | ST. PETERS, MO 63376



Kelly Long
314.994.4967
klong@descogroup.com